

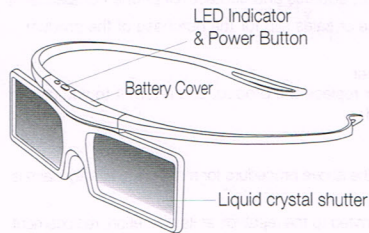
User's Guide

Features

The SSG-4100GB, SSG-4100GBW 3D glasses enable you to view 3D images. The Samsung 3D glasses communicate with Samsung 3D TVs via the 2.4GHz RF band.

- The Samsung 3D glasses can be used only with for all 2011 and 2012 Samsung D,E and ES series 3D TV, and can't be used with any other wireless communication products.

Parts



Components

3D Active glasses
(Frame body, Temples)

Button Battery
(CR2025)

- For information on how to attach the temples and pairing method of the glasses, refer to page 10.

Pairing 3D Active Glasses

- What is Pairing?** Pairing is a process of connecting 3D glasses and a 3D TV so that the two devices can exchange data.
- Ensure your Samsung TV and 3D glasses are no farther than 19.5 in (50 cm) apart from each another while pairing is in progress.

- ◆ **Turning the glasses on**
Press the power button briefly. The green LED is turned on for 3 seconds. (Make sure that 3D is activated on the TV before using the 3D glasses.)
- ◆ **Turning the glasses off**
Press the power button briefly. The red LED is turned on for 3 seconds.
- ◆ **Performing the pairing process.**
The green and red LEDs will blink for 2 seconds if pairing is in progress.

◆ **Operating range**

Recommended pairing distance: 50cm

Recommended viewing distance: 2-6m

Recommended viewing distance	2-6m (6 to 19.5 ft)
Recommended pairing distance	50 cm or less (19.5 in)

- The working distance depends on obstacles (a person, metal, walls, etc.) or electromagnetic waves.
- Turn off the 3D glasses while they are not in use. If you leave the 3D glasses on, the battery lifespan decreases.

◆ Pairing steps

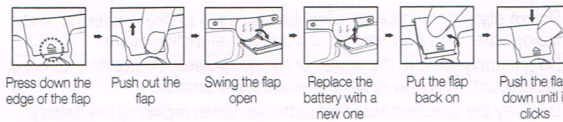
- Turn on the TV, and then move the glasses within 19.5 inches of the TV.
- Press the power button on the 3D glasses briefly. The 3D glasses will power on and pairing will start.
- The message "3D glasses are connected to TV." will be displayed on the TV screen when the pairing is successfully completed.
 - > If the pairing failed, the 3D glasses will power off.
 - > If the first attempt to pair fails, power the TV off and on again and perform step 2.
 - > **How to pair again:** Press the power button on the 3D glasses for more than 1 seconds.

<Pairing is needed again in the following situations:>

- If the 3D glasses do not function even when the power button is pressed on the 3D TV after repair.
- If you want to view a 3D video on a different for all 2011 and 2012 Samsung D,E and ES series 3D TV.

◆ Replacing the Batteries

If the red LED blinks every two seconds continually, replace the batteries with new ones.



- Please insert the battery in the same direction as indicated.

◆ Viewing guidelines

- When viewing a 3D video under a fluorescent lamp (50 Hz - 60 Hz) or 3-wavelength lamp, you may notice a small amount of screen flickering.
 - ※ If this occurs, dim or turn off the light.
- Switching the input mode while watching a 3D movie may disable the 3D function on the TV. As a result, the 3D glasses may not function and the movie may not be displayed properly.
- If the 3D glasses are moved outside of their working distance, the signal from the TV will disconnect and the glasses' 3D function will turn off after several seconds. The 3D glasses will power off after the 3D function turns off. When this happens, the red LED will turn on for 3 seconds.
 - ※ Under some circumstances, the 3D glasses may malfunction due to interference from other devices.
- Ensure you are within the working distance of the glasses when you view a 3D video.
 - ※ The images may not be viewable in 3D if you move outside of the working distance for 3 seconds.
- If you lie on your side while watching TV with 3D active glasses, the picture may appear dark or may not be visible.
- The 3D glasses may not work properly due to interference from other 3D products or electronic devices that operate on the 2.4GHz frequency such as a microwave oven or Internet AP. If he 3D function malfunctions due to interference, please move all other electronic or wireless communication devices as far away from the glasses and the TV as possible.
- The 3D effect may be experienced differently depending on the viewer. You may not notice the 3D effect at all if you wear glasses and have an unusual prescription.
- If a part of the 3D glasses or lenses is defective or damaged, it cannot be repaired and the glasses should be replaced. If the glasses stop working within the warranty period, the glasses can be repaired or replaced for free. If the glasses have been damaged due to the fault of the customer or the warranty period has expired, a new pair of glasses will have to be purchased.

CAUTION

IMPORTANT HEALTH AND SAFETY INFORMATION FOR 3D IMAGES. READ THE FOLLOWING CAUTIONS BEFORE YOU OR YOUR CHILD USE THE 3D FUNCTION.

- Adults should frequently check on children who are using the 3D function. If there are any complaints of tired eyes, headaches, dizziness or nausea, stop the child from viewing the 3D TV and ensure that they rest.
- Do not use the 3D glasses for other purposes such as general wear, sunglasses, protective goggles, etc.
- Some viewers may experience discomfort such as dizziness, nausea and headaches while viewing 3D TV. If you experience any of these symptoms, stop viewing the 3D TV, remove the 3D glasses and rest for awhile.
- Watching 3D pictures for an extended period of time may cause eye strain. If you experience any eye strain, stop viewing the 3D TV, remove the 3D glasses and rest for awhile.
- Do not use the 3D function or 3D glasses while walking or moving around. Using the 3D function or 3D Active Glasses while moving around may result in injury from running into objects, tripping, and/or falling.

Do not use chemicals containing alcohol, solvents, or surfactants, or chemicals such as wax, benzene, thinner, mosquito repellent, lubricant cleaners. These may cause a discoloration of or cracks in the product surface and cause the indicator labels on the product's surface to come off.

Do not use chemicals containing alcohol, solvents, or surfactants, or chemicals such as wax, benzene, thinner, mosquito repellent, lubricant cleaners. These may cause a discoloration of or cracks in the product surface and cause the indicator labels on the product's surface to come off.

Once the product surface and lens are easily scratched, make sure to use a clean soft cloth when cleaning to avoid scratching either the surface or the lens. As the product may become scratched if there are any foreign items on the cloth, make sure to shake off any dust before using it.

Do not disassemble, repair, or modify the 3D glasses yourself. Do not use the glasses when they are out of order or broken.

Be careful that you do not injure your eyes with the edges of the frame of the 3D glasses when wearing them.

Wash your hands when wearing or take off the 3D glasses.

Troubleshooting

Problem/Encounter...	Try this...
3D glasses do not work.	<ul style="list-style-type: none"> Replace the battery. The 3D glasses should be close to the TV. Make sure that the distance between the TV and your 3D glasses is less than 19.68 feet (6m) in a straight line. Check the 3D function settings of your TV.
LED keeps blinking	<ul style="list-style-type: none"> The battery is dead. Replace the battery.

Specifications (Model Number: SSG-4100GB SSG-4100GBW)

Optical	Shutters	Liquid crystal	Transmittance	37±2%
	Recommended viewing distance	2-6m (6.5 to 19.68 ft)	Field Rate	120 fields/s
Weight	Glasses	20.7g (including the battery: 23±0.5g)		
Power	Glasses	One 3V lithium/manganese dioxide battery 3V(CR2025)		
	Glasses	0.85mA (Average)		
Battery	Battery	Type	165mAh, 3.0V (CR2025)	
		Operating time when On	150hours	
Operating conditions	Operating Temperature	50 °F ~ 104 °F (10°C ~ 40°C)		
	Custody Temperature	-4 °F ~ 113 °F (-20°C ~ 45°C)		

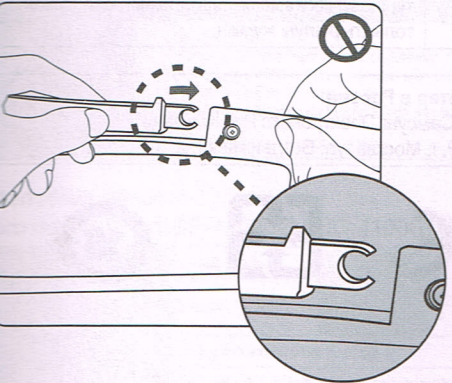
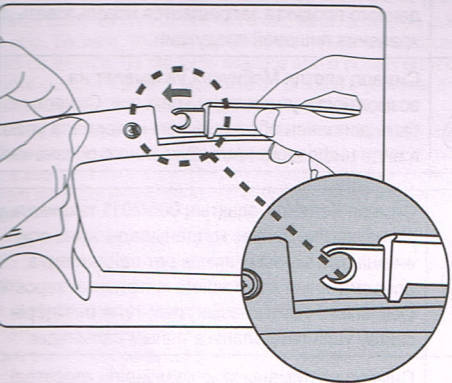
Product specifications may be changed without notice in order to enhance product performance.

The continuous operating time may differ depending on the wireless communication environment and usage conditions.

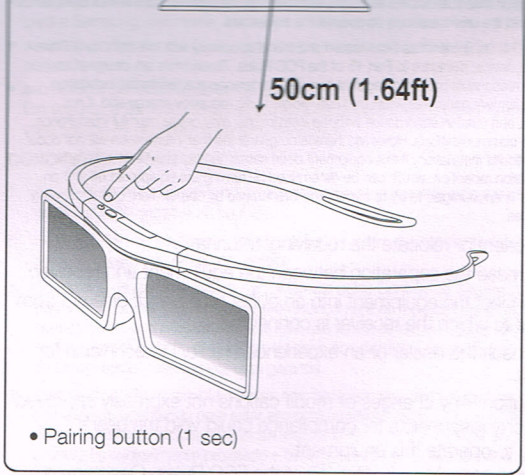
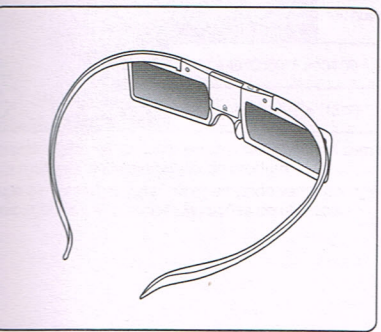
- your original receipt, invoice or sales slip for the purchase of the product as new;
 - your Warranty Claim Number.
- Samsung will then repair or replace the product and return it to you using the contact details provided.

WARRANTY CONDITIONS

- The warranty is only valid if the above procedure for making a warranty claim is followed.
- Samsung's obligations are limited to the repair or, at its discretion, replacement of the product or the defective part.
- Warranty repairs must be carried out by Samsung Authorised Service Centres. No re-imbursment will be made for repairs carried out by service centres or dealers that are not authorised by Samsung and any such repair work and damage to the products caused by such repair work will not be covered by this warranty.
- This product is not considered to be defective in materials nor workmanship by reason that it requires adaptation in order to conform to national or local technical or safety standards in force in any country other than the one for which the product was originally designed and manufactured. This warranty will not cover, and no re-imbursment will be made for such adaptation, nor any damage which may result.
- The warranty does not apply to any product that has been damaged or rendered defective as a result of any of the following excluded reasons, namely:
 - as a result of accident, misuse, or abuse;
 - through the failure to use this product for its normal purposes;
 - by the use of parts not manufactured or sold by Samsung;
 - by modification without the written permission of Samsung;
 - by damage resulting from transit, neglect, power surge or failure;
 - by damage resulting from lightning, water, fire, or acts of God;
 - as a result of normal wear and tear; or
 - difference in broadcasting methods or product standards between countries.
- This warranty is valid for any person who legally acquired possession of the product during the warranty period.
- NOTHING IN THESE WARRANTY CONDITIONS SHALL EXCLUDE OR LIMIT SAMSUNG'S LIABILITY FOR DEATH OR PERSONAL INJURY CAUSED BY THE PROVEN NEGLIGENCE OF SAMSUNG, UNLESS SUCH LIMITATION OR EXCLUSION IS PERMITTED BY APPLICABLE LAW.
- WITH THE EXCEPTION OF SAMSUNG'S LIABILITY WHICH CANNOT BE EXCLUDED OR LIMITED BY LAW, SAMSUNG SHALL NOT BE LIABLE FOR: ANY INDIRECT, INCIDENTAL, SPECIAL OR CONSEQUENTIAL DAMAGES LOSSES OR EXPENSES; OR LOST PROFITS; OR LOSS OF USE OR LOSS OF DATA; OR DAMAGE TO GOODWILL, REPUTATION OR LOST BUSINESS, ARISING DIRECTLY OR INDIRECTLY, FROM THE PURCHASE, USE OR SALE OF THE PRODUCT, WHETHER OR NOT SAMSUNG WAS ADVISED OR AWARE OF THE POSSIBILITY OF SUCH DAMAGES, LOSSES OR EXPENSES.
- WITH THE EXCEPTION OF SAMSUNG'S LIABILITY WHICH CANNOT BE EXCLUDED OR LIMITED BY LAW, SAMSUNG'S LIABILITY UNDER OR IN CONNECTION WITH THIS WARRANTY OR THE PURCHASE, USE OR SALE OF THE PRODUCT SHALL NOT EXCEED THE PRICE PAID FOR THE PRODUCT AS NEW.
- UNLESS PROVIDED FOR IN THIS WARRANTY, ALL CONDITIONS, WARRANTIES AND TERMS IMPLIED BY STATUTE OR OTHERWISE ARE HEREBY EXCLUDED TO THE MAXIMUM EXTENT PERMISSIBLE BY LAW.
- The above warranty conditions do not affect your statutory rights as a consumer or otherwise.



Assembly complete



• Pairing button (1 sec)